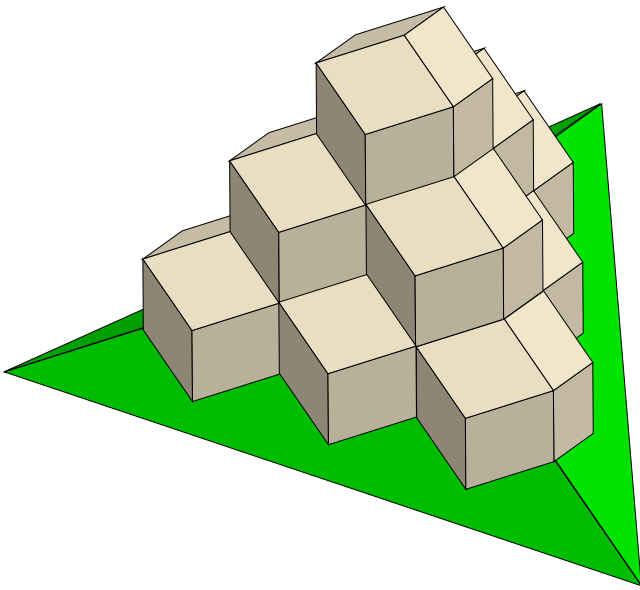
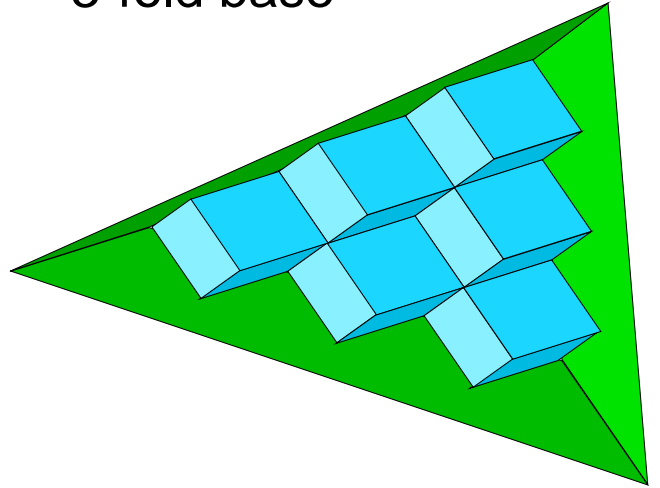


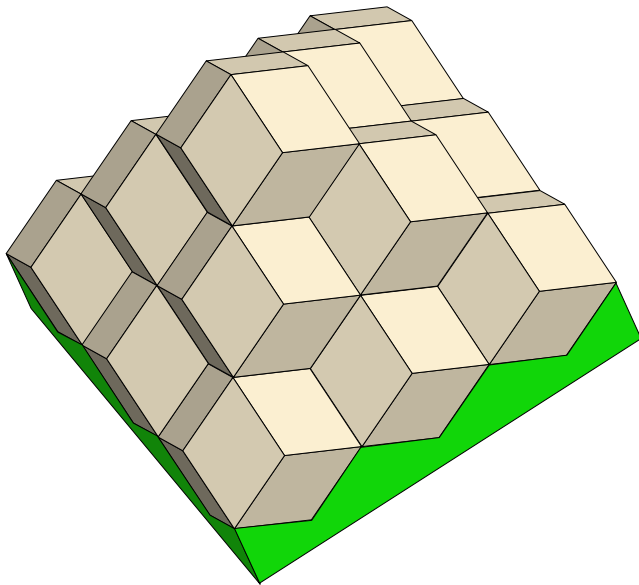
A stack of 10 Rhombic Dodecahedra showing how they pack with 3-fold symmetry



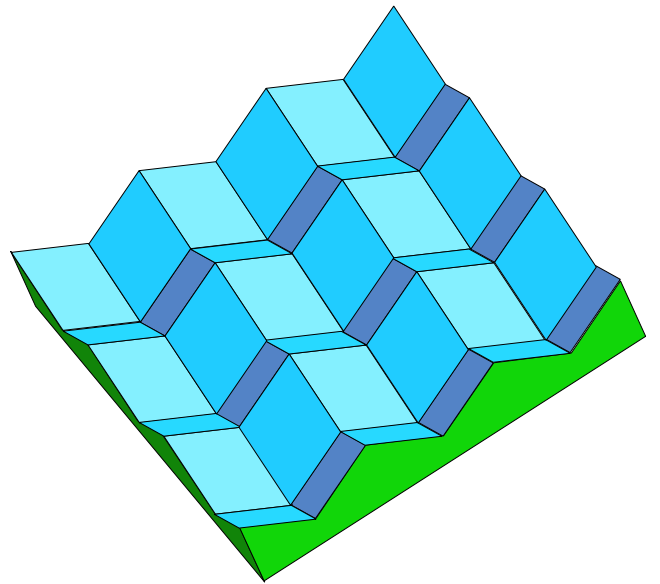
3-fold base



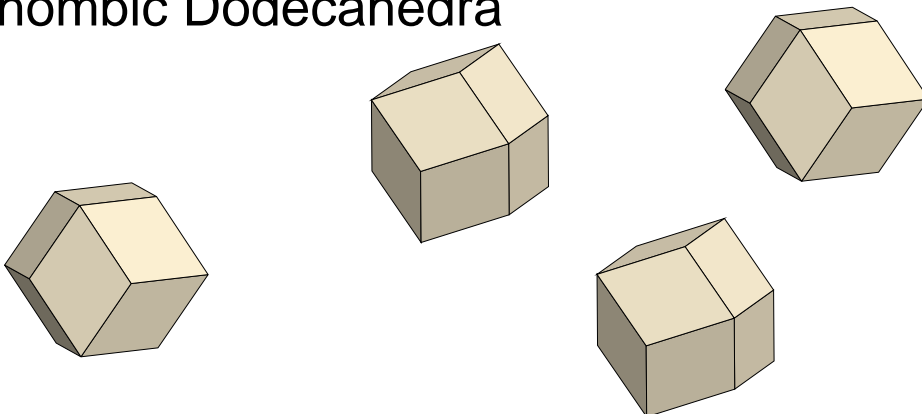
A stack of 14 Rhombic Dodecahedra showing how they pack with 4-fold symmetry



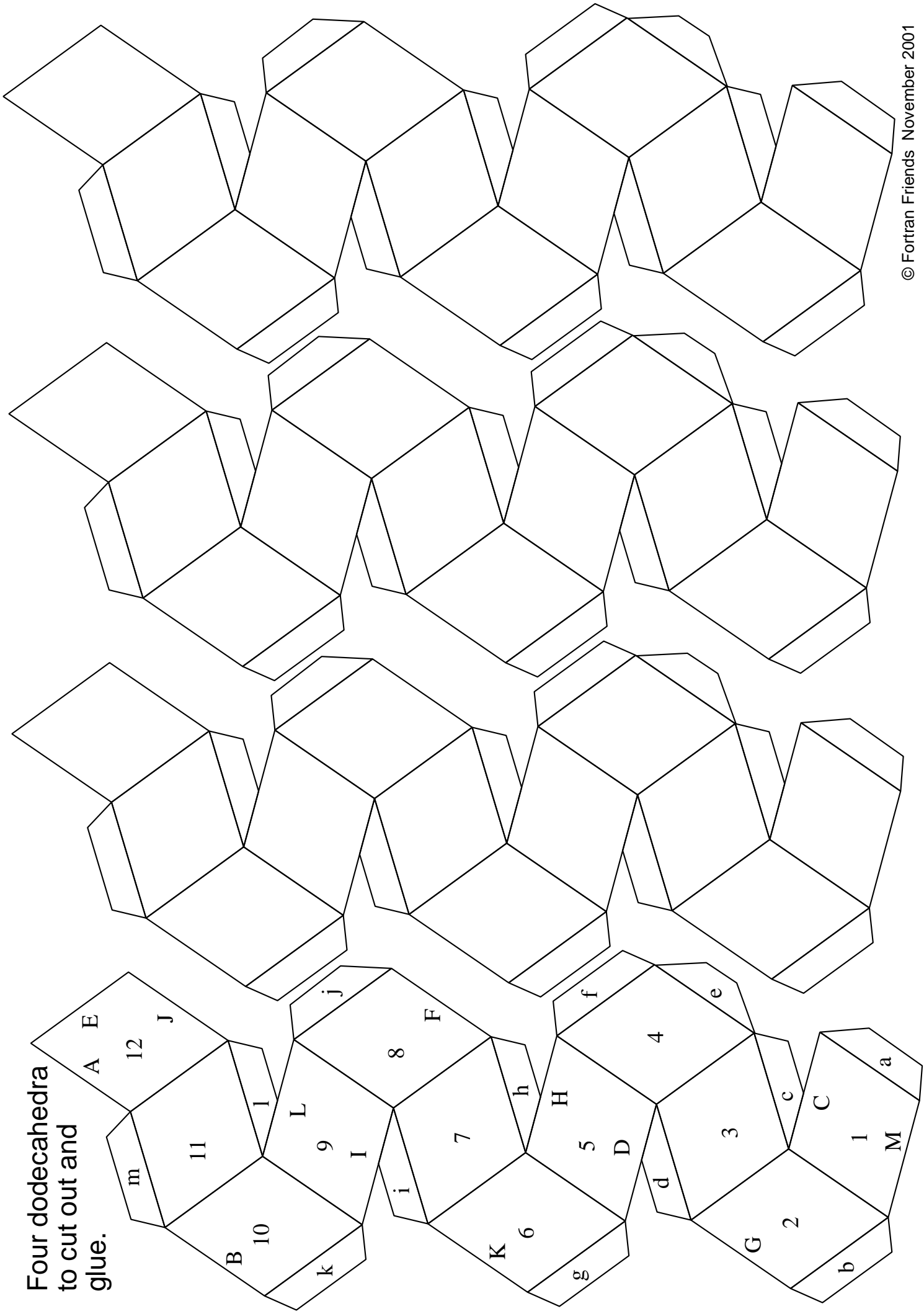
4-fold base



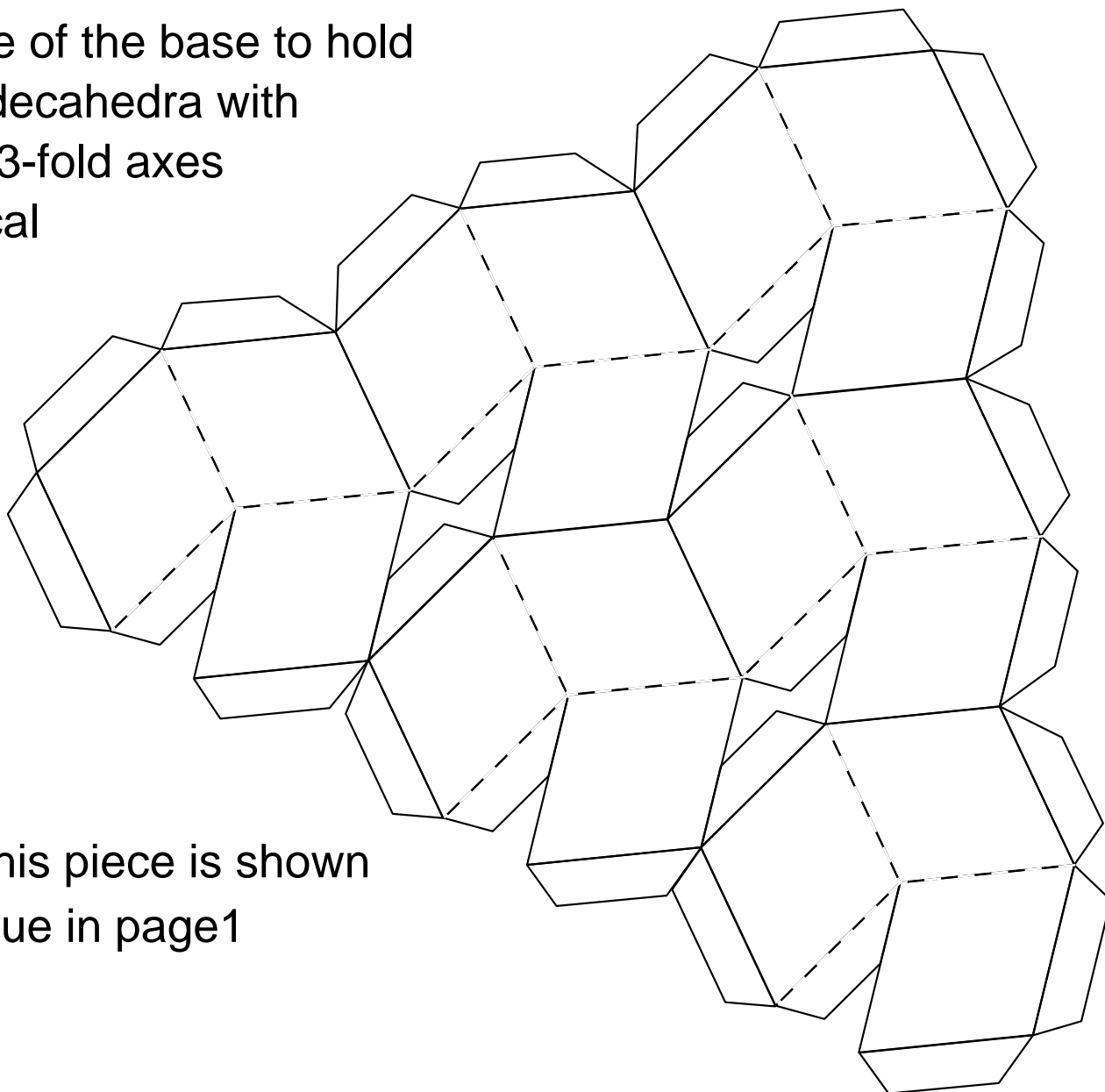
Rhombic Dodecahedra



Four dodecahedra
to cut out and
glue.



Inside of the base to hold
6 dodecahedra with
their 3-fold axes
vertical



This piece is shown
blue in page1

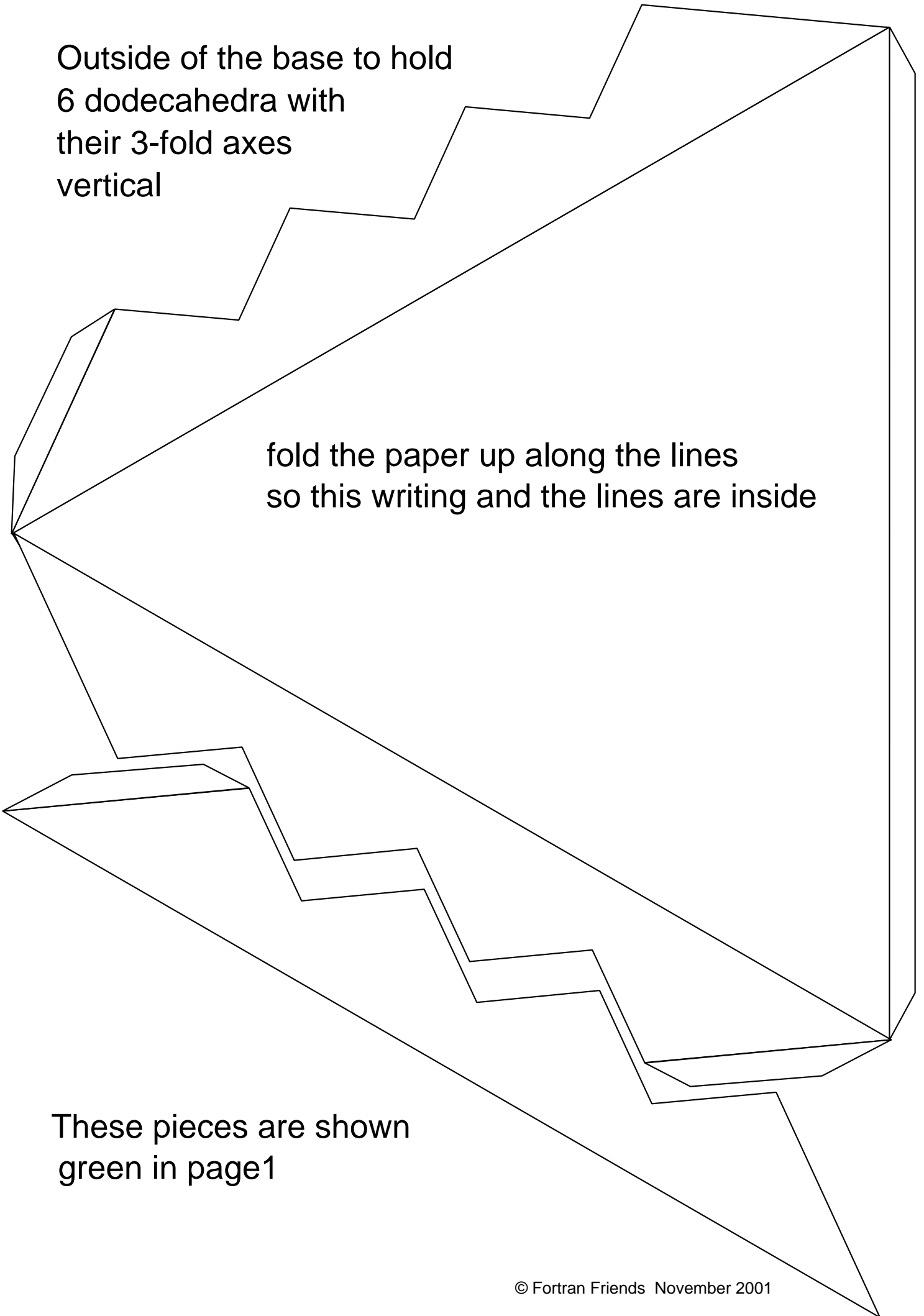
Bend down along the dotted lines;
bend up along the solid lines.

This makes 3-sided cups for
the dodecahedra when
seen from the other
side of the card.

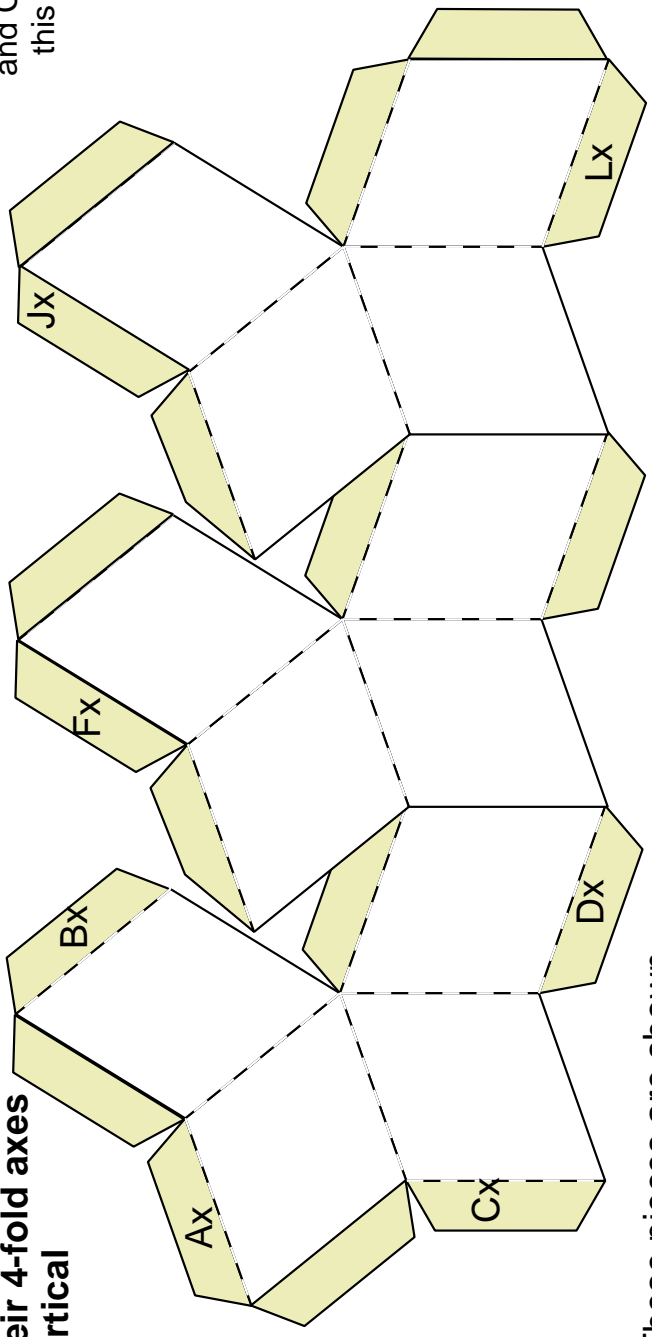
Outside of the base to hold
6 dodecahedra with
their 3-fold axes
vertical

fold the paper up along the lines
so this writing and the lines are inside

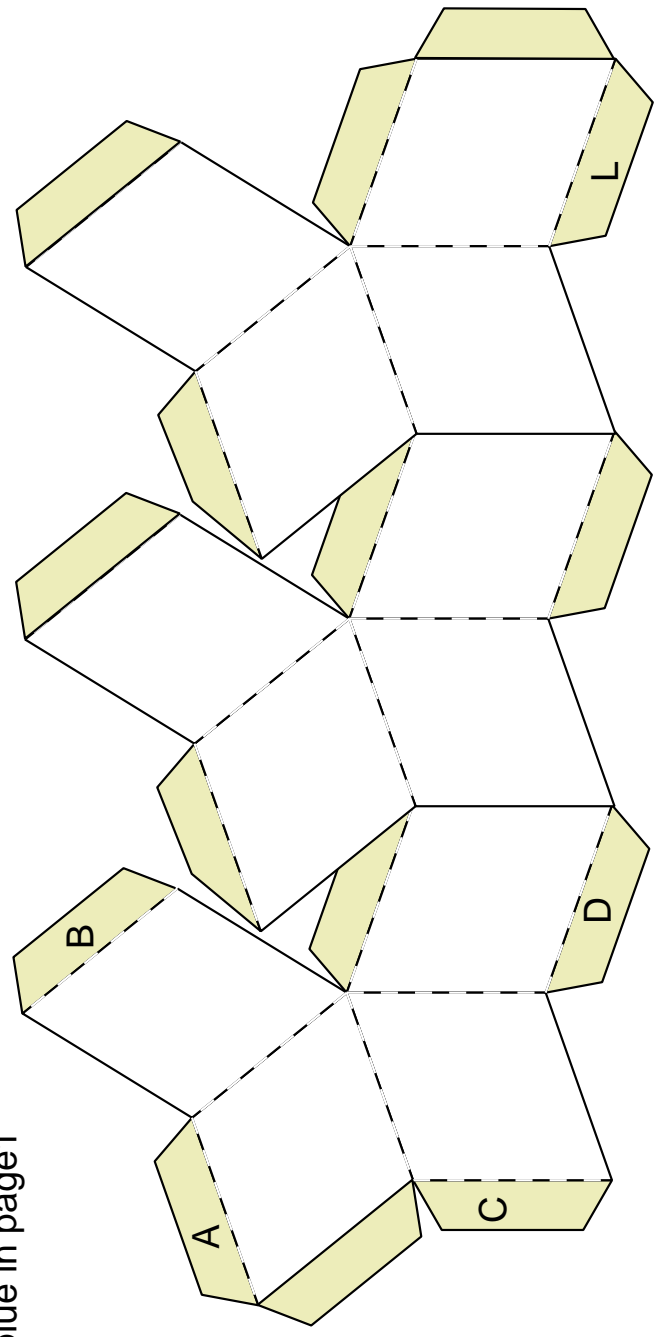
These pieces are shown
green in page1



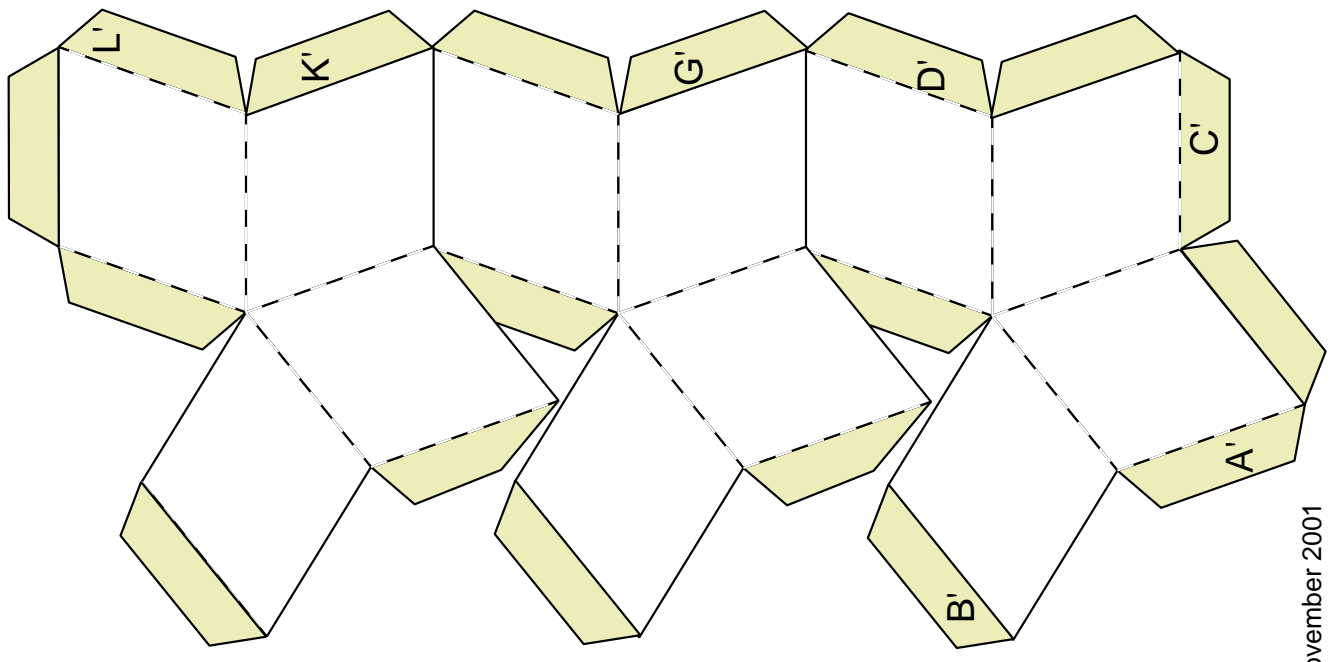
**Inside of the base to hold
9 dodecahedra with
their 4-fold axes
vertical**



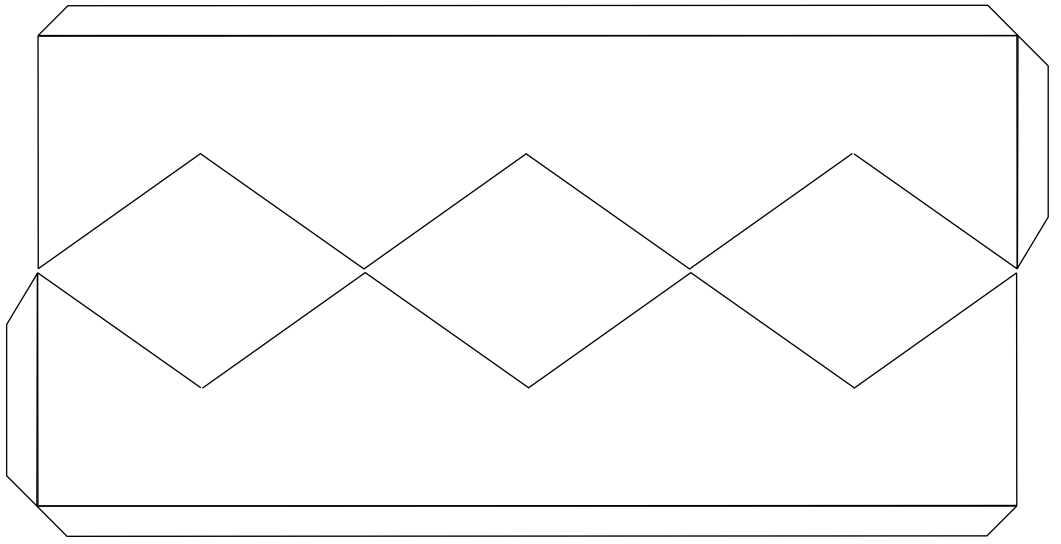
These pieces are shown
blue in page1



score along the dotted lines and stick up the sides to make 4 sided pockets
connect A, B to Cx Dx and the rest of the tabs on that strip
and C D to A' B' and the rest of the tabs on that strip
this should make a set of pockets in a square 3 x 3



Outside of the base to hold 9 dodecahedra with their 4-fold axes vertical.



These pieces are shown green in page1

